

# Incoming SUPT Students



# XL

**AMERICA'S AIRPOWER STARTS HERE!**





# Laughlin AFB, TX

**Welcome to Laughlin AFB, TX**

**47<sup>th</sup> Flying Training Wing**

**World's Best Flying Training Operation**



## **47<sup>th</sup> FTW Mission**

**Graduate the World's Best Military Pilots  
Deploy Mission-Ready Warriors  
Develop Professional, Resilient and Innovative Airmen**

***Welcome to Specialized Undergraduate Pilot Training. You can best prepare by understanding our mission, knowing how to reach us with questions, and taking full advantage of this Welcome Package we have prepared for you.***



# Laughlin AFB, TX

## Table of Contents

• 47 FTW Welcome & Mission Statement	1
• 47 STUS/CC Welcome	3
• SUPT Start Dates	4
• What to do: Two Weeks Out	5
• Physical Fitness	6
• Travel Management Office	6
• Housing	7
• Traveling to Laughlin AFB	10
• Pets	11
• Weapons	12
• What to do: First day	13
• Trans Flt Location / What to Bring	14
• In-Processing	15
• Life as an APT Student	16
• Pass/Leave Policy	17
• Notes on Officership	18
• Common Problems	19
• Base Facilities / Numbers	20
• DA-20 Boldface / Ops Limits	21
• Laughlin Experience	23
• Post SUPT	24



# Laughlin AFB, TX



**DEPARTMENT OF THE AIR FORCE**  
**47TH FLYING TRAINING WING (AETC)**



12 Jun 17

## MEMORANDUM FOR INCOMING SUPT STUDENTS

FROM: 47 STUS/CC

SUBJECT: Welcome Letter

1. Congratulations pilot trainees! Let me be the first to welcome you to Del Rio, Texas and Laughlin Air Force Base. I am Lt Col Cory Christoffer, Commander of the 47th Student Squadron. I will serve as your commander during your entire stay at Laughlin Air Force Base. As you progress in your Air Force journey from an Awaiting Pilot Training (APT) student, to a Specialized Undergraduate Pilot Training (SUPT) student, to a post-SUPT graduated student, you will remain in the 47th Student Squadron. Along with my chain of command, and my staff, I stand ready to provide you with the best support possible for your time here at Laughlin AFB.
2. Here in the 47th Student Squadron, we take great pride in our mission to produce disciplined and professional military pilots for the USAF. I need your hard work and total dedication to help make sure our mission is a success!
3. SUPT at Laughlin AFB is an opportunity of a lifetime; it will be up to you to make the most out of your time here. Below are my expectations.
  - a. In order to make great pilots, we must first start with good officers. Always remember you are a USAF officer 24/7, no matter the time, place, or audience.
  - b. Always obey your customs & courtesies as well as dress & appearance. These will set the standard for others to follow and will carry you throughout your career.
  - c. All Airmen must embrace the USAF "Fit to Fight" culture and pass the AF fitness assessment prior to starting SUPT.
  - d. As APTs & Grad Flight students, assigned to non-flying duties, you should display initiative and competence in whatever task you are assigned. Just remember, all work is honorable, and you should strive for excellence in all you do.
  - e. Punctuality is a trait of not only a good officer but a good pilot. Always show up to briefings and appointments on time.
  - f. Make every decision in line with the Air Force Core Values.
4. I look forward to meeting you and serving with you during your time at Laughlin AFB.

CHRISTOFFER.CO  
RY.R.1092176971  
CORY R. CHRISTOFFER, Lt Col, USAF  
Commander, 47th Student Squadron

Digitally signed by  
CHRISTOFFER.CORY.R.1092176971  
DN: cn=US, o=U.S. Government, ou=DoD, ou=PKI,  
ou=USAF,  
cn=CHRISTOFFER.CORY.R.1092176971  
Date: 2017.06.12 20:00:03 -0700



# Laughlin AFB, TX

## SUPT Class Start Dates:

<b>Class</b>	<b>Pre-Flying Academic Start</b>	<b>Projected Graduation</b>
19-01	03 Oct 17	19 Oct 18
19-02	26 Oct 17	15 Nov 18
19-03	22 Nov 17	11 Dec 18
19-04	20 Dec 17	15 Jan 19
19-05	23 Jan 18	11 Feb 19
19-06	15 Feb 18	07 Mar 19
19-07	12 Mar 18	01 Apr 19
19-08	03 Apr 18	23 Apr 19
19-09	24 Apr 18	15 May 19
19-10	16 May 18	06 Jun 19
19-11	07 Jun 18	28 Jun 19
19-12	28 Jun 18	22 Jul 19
19-13	23 Jul 18	12 Aug 19
19-14	14 Aug 18	04 Sep 19
19-15	07 Sep 18	26 Sep 19



# Laughlin AFB, TX

*If you have any questions regarding how early you are allowed to report to Laughlin AFB for SUPT training, please call the transition office front desk at:*

**DSN 732-5211 / COMM (830) 298-5211**

## What to do: 2 Weeks Out

- Call the 47 STUS SDOs to order your name patches. (830)-298-8355. Be prepared to give them your desired name on the name patch as well as any badges you may have already earned.
- You may call the Laughlin Manor (VOQ) up to 90 days prior to reserve a room for your first couple of nights here. You may stay at the Laughlin Manor up to 30 days. The Air Force will reimburse you for the first 10 days, but you will have to use BAH to pay over ten days. Remember, you must pay for your room every 15 days.

Laughlin Manor: DSN: 732-5731; Commercial: (830) 298-5731

- Get an Official Mail Center (OMC) Box Number to forward mail or use the General Delivery address. This is optional. You will be required to do this during in processing if you are significantly delayed from getting a permanent address.

PSC Box Duty Phone: DSN 732-4310; Commercial (830) 298-4310

General Delivery Address:

(Ensure you check in to the OMC if you will have mail delivered to the address below)

Name

General Delivery

477 4th St. Suite 1

Laughlin AFB, TX 78843-5144

- Call ahead to the Transition Flight if you have specific questions about the base. **The Transition Flight is the office that you will be reporting into the first day.**

**Transition Flight: DSN: 732-5211; Commercial: (830) 298-5211**

- If you have a pet or weapons, please see the students with pets and or students with weapons pages.
- Prepare for the Air Force Physical Fitness test as you may be required to take it soon after your arrival at Laughlin AFB.



# Laughlin AFB, TX

## Physical Fitness

While assigned to Transition Flight as an Awaiting Pilot Training (APT) student, you will participate in the Trans Flight "Fit to Fight" PT program. This program mandates that you will work out a minimum of 30 minutes, 3 times per week. Workouts can be any combination of weight and aerobic training and will be tracked via a sign-in sheet at the Losano Fitness Center. Failure to meet these minimum workout times will result in a formal counseling from the Flight Commander.

The Air Force Physical Fitness Test will be administered during the first month of SUPT in accordance with Air Force instruction 10-248. Students that fail to meet the fitness standard (75 or above) will be entered into a conditioning program and retested. The test consists of a 1.5 mile run, a waist measurement, push-ups and sit-ups.

**\*\*The max weight to start UPT is 245lbs\*\***

## Travel Management Office

On behalf of the 47th Transportation Division, welcome to Laughlin Air Force Base (AFB). The TMO provides transportation including travel arrangements for members/dependents, and household goods transportation & storage. As the military member, you provide the dates and TMO makes the arrangements for passenger travel and packing, pick-up and shipment of personal property.

Two problems UPT students experience while getting settled-in at Laughlin AFB are:

- Property does not arrive in time, or prior to your class start date.
- Not having enough time after your training starts to arrange for storage of excess property.

**Before you make the move to Laughlin AFB, review these helpful tips.**

- Contact TMO as soon as you arrive on base. Our number is (830) 298-5388 or 5178. We will ask for your name and a telephone number where you can be reached. When property arrives, we have two hours to arrange for delivery. If we cannot contact you, the property will be placed in storage. If your property goes into storage, it may take a few days to coordinate a scheduled delivery to your residence.
- **Only ship items that are absolutely necessary. Single members living in the dormitories do not need to bring furniture.** Prior to your personal property shipment, single and unaccompanied members should contact the housing office at (830) 298- 5733 to determine how dormitories are furnished. Housing will only pay for storage if you live on base. The bottom line, only bring what you need.
- For married or accompanied members, having a spouse to assist with your move is beneficial. For some the time available during in-processing, prior to your training start date is very limited. Include your spouse in all facets of the move.
- Frequently asked questions include, "can I have my personal property delivered on the weekend." The Government does not pay overtime costs associated with weekend deliveries. Due to this fact, local moving agents do not deliver on weekends. Please keep this in mind when scheduling a time



# Laughlin AFB, TX

for your delivery. Local agents understand that your schedule is tight and will do everything within their power to accommodate your needs. Department of Defense regulations state, "Commanders will provide time to all personnel for the shipping and receiving of personal property."

- It is important that personal property shipments are shipped at least three weeks prior to your scheduled arrival, ensuring the availability of your property once quarters are assigned. Remember, if your property goes into storage, it may take a few days to coordinate a scheduled delivery to your residence.
- Only 90 days of temporary storage is authorized (with or without dependents). The 90 day limit begins once property arrives at Laughlin AFB and is placed in storage.
- If you can arrange for quarters prior to your move, ask TMO about a "direct delivery." Your property will be delivered directly to the address you provide. Keep in mind, you must be here to receive your property.
- If delivery of your goods becomes an issue, it may be possible to have someone assigned to the Transition Flight sign for your personal goods.
- For further information about the Laughlin AFB TMO or other transportation functions, please call us at (830) 298-5388.

Don't hesitate to ask for assistance from the professionals we have working for us.

//SIGNED//

Traffic Management Officer

//SIGNED//

Chief, 47th Transportation Division

## Housing

### UNACCOMPANIED/SINGLE MEMBERS

You will either stay in a single occupancy dorm room or, upon availability, share a government owned duplex house with another student. Exception to this policy will be on a case-by-case base, however do not expect to live off base. Unaccompanied/single members are not authorized to contact Laughlin Family Housing without specific prior authorization from the Housing Office. Unaccompanied officers will not contact the Housing Office or Transition Flight about duplex waiting lists prior to arrival. You can only get on a waiting list after you have arrived on base and in-processed.

#### The Dormitories include:

- 1 large bedroom that includes an extra long full size bed, chest of drawers, TV media chest, and desk and chair.
- 1 kitchen with stove, refrigerator, and microwave
- 1 private bathroom
- Every room is cable and phone ready, please make arrangements with the following companies for service (optional):
  - Cable: Time Warner (830) 775-3567
  - Phone: Verizon (800) 483-4000
- The laundry facilities are centrally located within the UOQ building and the service is free
- Wait time for a dormitory room averages from 1 day to 6 weeks (these times are an average and vary from class to class)



# Laughlin AFB, TX

The Government Duplexes (located on Ciarfeo and Carlson) include:

- 2 Bedrooms
- 1 Bath
- 1 Full Kitchen with microwave, stove, refrigerator, and dishwasher. Each unit has hookups for a washer and dryer.
- Wait times on average from 1 day to 6 weeks for unaccompanied/single students (these times are an average and can change from class to class).
- Roommates must be within one class from each other.

## **MARRIED MEMBERS**

Married members have the option to buy or rent off base or to rent on base from Laughlin Family Housing. Married members who are on accompanied orders but will be unaccompanied while in UPT please contact the Trans Flt office.

Laughlin Family Privatized Housing managed by Hunt Military Communities (830) 298-1701:

- Rent is equal to your BAH, utilities included – rent is paid in advance
- Free yard care
- No pet or security deposit
- Free pest control
- 2, 3, and 4 Bedroom houses available
- Fences in some yards
- Resident appreciation events
- Appliances included: gas stove, refrigerator, dishwasher, some microwaves

## **MORE INFORMATION**

- BAH rates can be found here: [Laughlin AFB BAH](#) Zip code is: 78843/78840
- Electricity: (888) 216-3523
- More information on Laughlin AFB and Del Rio Housing can be found at the [AF cross roads website](#)
- Military Housing Office: (830) 298-5650



# Laughlin AFB, TX



July 20, 2015

Welcome to Laughlin!

Congratulations on your assignment to Laughlin AFB! We look forward to assisting you with your move whether you are interested in residing on base in privatized housing or in the local community.

Hunt Military Communities "Laughlin Family Housing" provides privatized housing on Laughlin AFB. Duplex homes with tile or carpet flooring, all appliances (some microwaves) and washer/dryer hook-ups. The waiting time for privatized housing varies according to rank and family size. You may contact Laughlin Family Housing at 830-298-1701 or view our website ([www.laughlinfamilyhousing.com](http://www.laughlinfamilyhousing.com)) for more information. Find us on Facebook at "Laughlin Family Housing". Our customer service hours are 0800-1700, Monday-Friday.

**UTILITIES ALLOWANCE:** All privatized homes on Laughlin AFB have individual meters. The Member receives a monthly utility allowance (for gas & electric; Hunt Housing pays water & sewer) which is 110% of the average actual utility cost for the type of unit occupied. Average consumption is determined by actual utility meter readings. The utility allowance is recalculated annually, reviewed by utilities engineer(s) and approved by the Government. .

**PETS:** A maximum of 2 pets per household are allowed and there is a weight limit for each pet of 100 pounds. Certain dog breeds (pureblood or mixed) are prohibited in privatized housing: Pit Bull (American Staffordshire Bull Terrier or English Staffordshire Bull Terrier), Rottweiler, Doberman Pinscher, Chow, and Wolf Hybrids. The only exceptions to this policy are ADA-approved and documented service dogs. Although Hunt Housing does not charge a pet deposit, you are responsible for any damages to the home your pet may cause. This may include replacement of flooring or a pet treatment of the flooring.

The Housing Management Office (HMO) provides dorm information, on and off base housing referral service to all personnel assigned/attached to Laughlin AFB.

Again, welcome to Laughlin Air Force Base, we look forward to meeting you.

Mary Lobo  
Community Director  
Laughlin Family Housing



# Laughlin AFB, TX

## Travel to Laughlin AFB

1. San Antonio International Airport is usually the most economical route to use for travel by air though there are several other options at various distances of travel.
2. If you are traveling by automobile from the east (San Antonio), take Highway 90 west to Del Rio. Laughlin AFB is located on Hwy 90 approximately 6 miles east of Del Rio. From the west (El Paso), you may travel on Interstate Highway 10 east to Van Horn and then follow Hwy 90 east to Del Rio. You may also elect to remain on IH 10 east to Sonora and then Hwy 277 south to Del Rio (longer route but more time spent on the Interstate, if you prefer). Once in Del Rio follow the signs to Highway 90 east. This will take you directly to Laughlin AFB.
3. The main gate is located approximately 6 miles east of Del Rio on Highway 90. The main gate is open 24 hours. Be sure to have a valid ID as well as a copy of EAD orders when you show up to the main gate to be allowed on base.





# Laughlin AFB, TX

## Students with Pets

MEMORANDUM FOR INCOMING SUPT STUDENTS

FROM: 47 STUS/DOT

SUBJECT: Students with pets

1. Congratulations on your assignment to Laughlin AFB and Specialized Undergraduate Pilot Training. In order to comply with AFI 32-6005 and AFI 32-6004 each base Wing Commander is responsible for creating the policies for the housing units for his base.
2. For Laughlin AFB, the only pets allowed in billeting, TLFs, unaccompanied officer duplexes or the dorms are domesticated fish. If a student comes to pilot training with anything other than a fish, they will be responsible for making arrangements for the boarding of their pets for the duration of their stay. According to AF instructions, all unaccompanied students are required to live in the dormitories or duplexes. Married students may have pets in privatized housing but there are limits on the number and breed restrictions (contact housing for exact rules).
3. If you arrive at pilot training with a pet there are a few options available to you. You can arrange to leave your pet with someone residing in married housing or off-base, you can leave your pet with a family member, you can put your pet in a kennel, or you can reside off base **with a waiver**. *However, WAIVERS AUTHORIZING STUDENTS TO LIVE OFF BASE ARE GRANTED BASED PRIMARILY UPON UOQ AVAILABILITY, **NOT** UPON PET OWNERSHIP.* The kennels available in town are: [Animal House \(830-768-1105\)](tel:830-768-1105) and [The Pet Resort \(830-298-1345\)](tel:830-298-1345).

//Signed//

Transition Flight Commander  
47th Student Squadron



# Laughlin AFB, TX

## Students with Weapons

MEMORANDUM FOR INCOMING SUPT STUDENTS

FROM: 47 STUS/DOT

SUBJECT: Students with Weapons

1. In an effort to ensure the highest level of security for our students as well as those already assigned to this installation, weapons and ammunition are not allowed to be stored in billeting, the Temporary Living Facilities, or the dormitories. Weapons must be stored in the Security Forces Armory or secured with a trusted member in an off base property or base housing. Unaccompanied officer duplexes are NOT considered base housing and weapons will not be stored there. If it is necessary to store the weapons in the armory, contact Security Forces at commercial (830) 298-5100 or DSN 732-5100 upon arriving at the base. The Security Forces Armory is available 24 hours a day. Please ensure all weapons and ammunition are secured appropriately before checking into billeting.

//Signed//

Transition Flight Commander  
47th Student Squadron



# Laughlin AFB, TX

## What to do: First day

- Check-in at Laughlin Manor (VOQ) for temporary lodging.

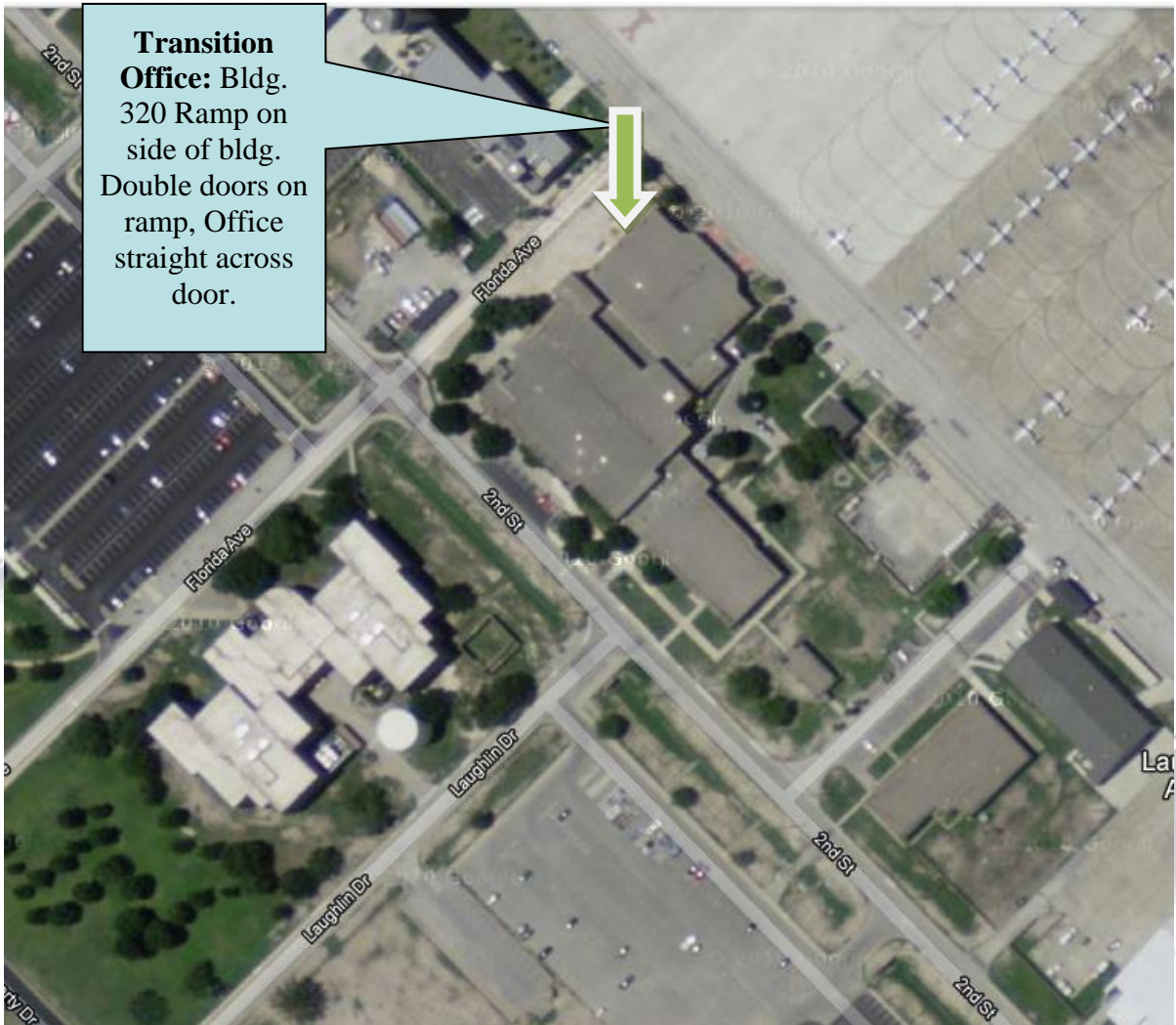
**Laughlin Manor: DSN: 732-5731; Commercial: (830) 298-5731**

- When you drive onto the base from the main gate (off Highway 90), continue straight on Liberty Drive until you intersect Arnold Blvd. Take a right on Arnold Blvd and proceed for one block to Fourth Street. Laughlin Manor will be the large building with palm trees on your left across the street from the BX.
- Report to the Transition Flight (Bldg. 320 room A130) at 0830 Monday through Friday for further in-processing instructions. Uniform is ABUs. Here you will receive an in-processing checklist and instructions on what to do next. See pg. 15.
- **USFA Mass In-Processing Brief** will take place at Club XL on 27 July 17. Mass In-Processing will begin promptly at 0800 and uniform will still be ABUs. For questions about this event, contact the Transition Flight Commander's office at (830)-298-5156 or (830)-298-5152.

*All incoming students will be assigned to the Transition Flight until their respective Pre-Flying Academics class start date.*



# Laughlin AFB, TX



## What to bring

Have the following items readily accessible for in-processing to ensure a smooth transition during the first few days:

1. 20 copies of orders (Front and Back)
2. Identification Card (Drivers license and military ID card if you have one)
3. Most recent official Physical Fitness Test scores  
**Note: You will likely be required to take another PFA shortly after arrival.**
4. Proof of car registration, insurance, and title
5. Medical, shot, and dental records (Flight Physical)
6. Traffic Management Office papers and receipts from move if applicable
7. All uniform items (Flight suits will be issued prior to Introductory Flight Training (IFT))
8. All personnel records



# Laughlin AFB, TX

## In-Processing

1. During your initial briefing with the SDOs, you will be given a schedule with a series of appointments as well as an in-processing checklist. Do not attempt to accomplish checklist items that require appointments outside of your assigned time. **It is imperative that you are on time to every appointment, as any missed appointments will greatly delay in-processing.**
2. Between appointments, begin completing the forms included in your in-processing packet. (You will be given an address during your appointment with the post office.)
3. For the High Risk Activity Form, list any hazardous activity you may ever do while at Laughlin. Regardless of past experience, we require listing Boating/Water Skiing as a hazardous activity as that is a very popular activity around Laughlin.
4. You will have several computer based training (CBT) programs in addition to online checklist items. Once you have gained computer access (check your in-processing schedule) you should work on accomplishing this training between appointments. Computers are available in the back room of the student squadron (STUS). You can access the ADLS website via the Air Force Portal.
5. Motorcycle riders are required to meet with the motorcycle safety rep **prior** to riding a motorcycle on base.
6. If you are planning to leave the local area (30 miles radius) you must turn in an **AF Form 4392** to the SDO inbox and receive a safety briefing by the Assistant FLT/CC or FLT/CC. Weekend Passes and Leave will be discussed in greater detail later in this booklet.



# Laughlin AFB, TX

## Life as an APT

### Responsibilities

Until you begin SUPT, you will be known as an APT (Awaiting Pilot Training) student. Your first responsibility as an APT is to complete in-processing. Your checklists provided by the Transition office will help you greatly in accomplishing this task. Since you will be employed throughout the 47 FTW shortly, it is imperative to complete your in-processing checklist ASAP.

### Accountability

Every day you will be required to report to the transition office at 0830 or to your job at the time directed by your supervisor. UOD for in-processing is ABUs, or as required for your APT job. Transition Flight Roll Calls will normally take place on Fridays at 0900 in Anderson Hall. Time and place are subject to change but will be communicated ahead of time. Roll Call is the Flight Commander's opportunity to pass along critical information to all APTs as well as receive feedback. Failure to attend either daily or weekly roll call may result in adverse administrative actions.

### SDOs

Within the transition office you will find several APTs known as SDOs (Staff Duty Officers) working various projects for the Flt/CC and Assistant Flt/CC. These Lieutenants will be your first stop for any transition office related issues or questions, and are a great resource for more information.



# Laughlin AFB, TX

## Passes / Leave Policies

**Weekends:** Be aware that time off on weekends are not a given when you are an APT. If you are not assigned a job, the transition office will utilize you, and this may include weekends. The SDOs will give as much notice as possible in order to not interrupt any plans. When making plans for the weekend it is important to fill out a **4392**. All APTs planning on traveling beyond **30 miles** of Laughlin AFB must fill out a 4392 and attend a safety briefing led by the Transition Flight/CC or AFC. Any High Risk activities will also need to be briefed by the Flight Commander. There are several weekend activities within the local area including the AF marina on Lake Amistad and countless bike and hiking trails in the local parks as well as on base.

**Passes:** Passes are days which you are not required to work. Every weekend is considered a two day pass unless specifically assigned duties on either of those days. Additional passes are typically given over holidays.

**Leave:** Each active duty member of the USAF receive 2.5 days of leave per month. Leave begins at 1201 on the day before your first official day of charged leave to allow for travel. You must submit a 4392 before your leave will be approved on LeaveWeb.

**Limitations:** APTs are allowed to travel anywhere in the lower 48 states on a pass if the 4392 has been approved.

**International/OCONUS Travel:** International travel must receive approval from the 47 STUS/CC. This process is long and requires an extensive paper trail. **No one is allowed to enter Mexico within 50 miles of the Mexican border and the Mexican states of Coahuila, Chihuahua, Durango, Jalisco, Michoacan, Nuevo Leon, San Luis Potosi, Sinaloa, Tamaulipas, and Zacatecas are also off limits**

### Leave vs. Pass:

IAW AFI 36-3003 leave CANNOT be combined with a pass. One common occurrence is over the winter holidays. Say for example you want to head home for 20 Dec through 27 Dec. If a 2-day pass is given for 24-25 Dec, you will still be required to take leave over the **entire** period. (You must use 8 days of leave, rather than try to combine 6 leave days with a 2-day pass)

### Negative Leave:

For those who have a legitimate and substantive need to use more leave than they have accrued, there is the option to use negative leave. Such requests must be submitted via hardcopy and will be approved by the 47 STUS/CC on a case-by-case basis.



# Laughlin AFB, TX

## Notes on Officership

**Uniform Wear** – As an officer in the U.S. Air Force, your dress and appearance should never be brought into question. Any deviations from regulations will be dealt with swiftly and severely. UOD as an APT is ABUs until you leave for IFT. While at IFT, students will wear a combination of Short Sleeve Blues (SSBs) and Flight Duty Uniforms (FDU) at the discretion of IFT leadership. Once graduated from IFT, students will remain in the FDU as an APT until they start their formal pre-flight academics.

**Core Values** – The USAF Core Values must be present in every aspect of your lives including off duty time. You are an AF officer 24/7. Every day you will experience situations in which your attitude and integrity will be tested. Your response to these situations will eventually turn into habits. Start becoming the officer that you have envisioned yourself to be.

**Alcohol** – If you consume alcohol, you must know when to stop. You know you have crossed the line with alcohol when you can no longer control your actions. Be aware that the repercussions for alcohol related incidents are extremely severe. Any alcohol related incident is grounds for removal from SUPT, and possibly the USAF. A DUI will result in a LOR/UIF, removal from SUPT, likely separation from the Air Force, and educational recoupment of all scholarships awarded. (For USAFA graduates, that number tops \$100,000) Don't trade the chance to pilot a multimillion-dollar aircraft for another three-dollar beer.

**The Wingman Policy** – We take care of each other. This isn't just being a DD, although that is a part of it. Be the voice of reason in a sticky situation and never leave a buddy behind. **A good wingman will not only have a plan, but will carry out that plan or get the plan back on the right track when things go wrong.**



# Laughlin AFB, TX

## Common Problems Experienced by APT Students

**Housing:** Pending your time of arrival at Laughlin Air Force Base you may need to spend more than 30 days at billeting due to overcrowding. This is often the case for lieutenants arriving from USAFA in August or ROTC Detachments in autumn. Be patient as housing is doing their best to accommodate everyone.

**Firearms:** There is limited space available within the armory for your firearms. It is highly recommended that you contact the base armory prior to your arrival at Laughlin AFB to ensure there is room for your weapon(s). Although it is easy to obtain a hunting license in the state of Texas, unless it absolutely needed, it is suggested that you leave your firearms at your home of record.

**Pets:** Hunt cannot guarantee you a house with a fenced yard. Contact Pinnacle prior to your arrival.

**Finance:** Sometimes due to unforeseen and/or uncontrollable circumstances, pay may be delayed up to 30 days. Make sure that when you arrive at Laughlin AFB, you have the ability to financially support yourself during this time period. There is the possibility of receiving a pay advance if necessary but this option is limited to a case-by-case basis.

**In-Processing:** This process may seem redundant and often times with slow results. Please understand that each program requires time to build a package. Go to the SDOs with any question or concerns.



# Laughlin AFB, TX

## Base Facilities

	Hours	Phone
<b>Laughlin Manor (VOQ)</b>	24/7	5731
<b>Transition Flight</b>	M-F 0800-1630	5211
<b>UOQ</b>	M-F 0730-1630	5903
<b>TMO</b>	M-F 0730-1630	5206 or 5178
<b>Security Forces</b>	M-F 0900-1600	5100
<b>* For the Armory, call the above extension at all hours</b>		
<b>Official Mail Center (OMC)</b>	M-F 1100-1700	4310 or 5264
<b>Fitness Center</b>	M-Th 0500-2300	5251 or 5326
	F 0500-2100	
	Sat-Sun 0700-1900	
<b>BX</b>	M-Sat 0900-1900	2111
	Sun Closed	
<b>Commissary</b>	Mon Closed	5822
	T-Th 1000-2000	
	W&F 0800-1800	
	Sat 0900-1800	
	Sun 1000-1700	
<b>Subway (BX)</b>	M-Sat 0900-1900	2600
	Sun Closed	
<b>Stripes</b>	M-Th 1100-1400	5295
	F 1400-2200	
<b>Silver Wings (Flt Line)</b>	M-F 0700-1600	5661
<b>Club XL</b>	M-F 1100-1300	5134 or 5374

***Laughlin AFB does not have a Military Dining Facility***

**DSN 732-XXXX COMM (830) 298-XXX**



# Laughlin AFB, TX

## Bold Face and Ops Limits

During Introductory Flight Training (IFT) you will be required to write and recite the following information verbatim. Visit [DossIFS.com](http://DossIFS.com) for more information.

### DA20-C1 BOLDFACE

<b>ENGINE FIRE ON THE GROUND</b>  <b>FUEL SHUTOFF VALVE — OFF</b> <b>CABIN HEAT — OFF</b>
<b>ELECTRICAL FIRE ON THE GROUND</b>  <b>GEN/BAT MASTER SWITCH — OFF</b>
<b>ABORT</b>  <b>THROTTLE — IDLE</b> <b>BRAKES — AS REQUIRED</b> <b>FLAPS — CRUISE</b>
<b>ENGINE MALFUNCTION IN FLIGHT (SUFFICIENT RUNWAY REMAINING TO LAND)</b>  <b>AIRSPEED — 60 KIAS</b> <b>FLAPS — LDG</b>
<b>ENGINE MALFUNCTION IN FLIGHT (FUEL PRESSURE LOSS)</b>  <b>FUEL PUMP — ON</b>
<b>ENGINE FIRE DURING FLIGHT</b>  <b>FUEL SHUTOFF VALVE — OFF</b> <b>CABIN HEAT — OFF</b>
<b>ELECTRICAL FIRE DURING FLIGHT</b>  <b>GEN/BAT MASTER SWITCH — OFF</b> <b>AIR VENTS AND WINDOWS — OPEN</b>
<b>CABIN FIRE IN FLIGHT</b>  <b>GEN/BAT MASTER SWITCH — OFF</b> <b>AIR VENTS AND WINDOWS — OPEN</b> <b>CABIN HEAT — OFF</b>

14 JUNE 2007



# Laughlin AFB, TX

## DA20 OPERATING INFORMATION TABLE

### Indicated Airspeeds

V <sub>SO</sub> (Stall speed in LDG configuration, kts)	34
V <sub>SI</sub> (Stall speed in CRUISE configuration, kts)	42
V <sub>R</sub> (Rotate Speed, kts)	44
Lift-off airspeed (kts)	52
<b>Forced landing final approach airspeed (flaps LDG, kts)</b>	<b>55</b>
<b>Min. engine-out airspeed to sustain windmilling prop (kts)</b>	<b>60</b>
<b>Forced landing final approach airspeed (flaps T/O, kts)</b>	<b>60</b>
<b>Forced landing final approach airspeed (flaps CRUISE, kts)</b>	<b>64</b>
Normal landing final approach airspeed (kts)	60
No-Flap landing final approach airspeed (kts)	65
V <sub>X</sub> (flaps T/O, kts) (Best angle of climb)	60
V <sub>X</sub> (flaps CRUISE, kts) (Best angle of climb)	65
V <sub>Y</sub> (flaps T/O, kts) (Best rate of climb)	66
V <sub>Y</sub> (flaps CRUISE, kts) (Best rate of climb)	70
<b>Best glide airspeed (1764 lbs) (L/D Max)</b>	<b>73</b>
<b>V<sub>FE</sub> (flaps LDG, kts) (Max. Airspeed with flaps extended)</b>	<b>78</b>
<b>V<sub>FE</sub> (flaps T/O, kts) (Max. Airspeed with flaps extended)</b>	<b>100</b>
<b>V<sub>A</sub> (kts, 1764 lbs) (No full or abrupt control inputs above V<sub>A</sub> or overstress conditions will occur.)</b>	<b>106</b>
V <sub>NO</sub> (Max. structural cruising speed, kts)	118
Force propeller to windmill if stopped, starter inop (kts)	137
V <sub>NE</sub> (Never exceed airspeed, kts)	164

### Maneuvering

Positive limit load factor (flaps CRUISE)	+4.4
Negative limit load factor (flaps CRUISE)	-2.2
Positive limit load factor (flaps T/O or LDG)	+2.0
Negative limit load factor (flaps T/O or LDG)	0
<b>Max. permissible bank angle for steep turns (in degrees)</b>	<b>60</b>

### Voltmeter

Voltmeter lower limit red arc (volts)	8-11
Voltmeter caution range yellow arc (volts)	11-12.5
<b>Voltmeter green arc (volts)</b>	<b>12.5-16</b>
Voltmeter upper limit red line (volts)	16.1

### Fuel

Approved fuel grade	100LL
<b>Usable fuel (US gal.)</b>	<b>24.0</b>
Fuel tank capacity (US gal.)	24.5

### Weight and Balance

Max. ramp weight (lbs)	1770
<b>Max. takeoff weight (lbs)</b>	<b>1764</b>
Max. landing weight (lbs)	1764
Forward CG limit (at or below 1653 lbs)	7.95
Forward CG limit (1764 lbs)	8.07
Aft CG limit (1764 lbs)	12.16
Aft CG limit (at or below 1653 lbs)	12.48
Max. weight in baggage compartment (lbs)	44

### Power Plant Operation

Min. idle mixture rise leaned to peak (runup/shutdown)	50
Min. rpm during engine runup idle check	975
<b>Min. rpm for in-flight (area) idle beyond gliding range of a runway</b>	<b>1400</b>
<b>Min. rpm operations with fuel pump off</b>	<b>1400</b>
Min. permissible static rpm (full throttle runup)	2000
Tachometer normal operating range (rpm)	700-2800
<b>Max. permissible continuous rpm</b>	<b>2800</b>
Min. rpm drop during magneto check	25
Max. rpm drop during magneto check	150
Max. rpm drop difference between magnetos	50
Max. permissible continuous bhp	125
Min. oil pressure (psi)	10
<b>Oil pressure normal operating range (psi)</b>	<b>30-60</b>
<b>Max. time for oil pressure to reach 10 psi after start (secs.)</b>	<b>30</b>
Max. oil pressure for full power operation if OAT < 0°C (psi)	70
<b>Max. oil pressure (psi)</b>	<b>100</b>
Min. oil temperature (°F)	75
<b>Max. rpm after start until oil temp indication registers</b>	<b>1000</b>
<b>Oil temperature normal operating range (°F)</b>	<b>170-220</b>
<b>Min oil temp. to begin an area SFL at Area Idle (°F)</b>	<b>170</b>
Min. oil temp for full power operation if oil pressure norm (°F)	100
Max. oil temperature (°F)	240
<b>Min. oil quantity (US qts)</b>	<b>4</b>
<b>Max. oil quantity (US qts)</b>	<b>6</b>
Fuel pressure lower limit red line (psi)	3.5
Fuel pressure upper limit red line (psi)	16.5
<b>Max. continuous starter operation (secs.)</b>	<b>10</b>
<b>Max. cumulative starter op. before cooling 3-5min. (secs.)</b>	<b>30</b>
Max. time for CHT below 300°F in descent (minutes)	5
Min. CHT (°F) takeoff & descent	240
CHT normal operating range (°F)	300-420
CHT caution range (°F)	420-460
Max. CHT (°F)	460
Max. OAT (°C) operation w/ full winterization kit	0
Max. OAT (°C) operation w/ partial winterization kit	12.5

### Takeoff & Landing

<b>Max. total wind student dual (kts)</b>	<b>25</b>
<b>Max. total wind student solo (kts)</b>	<b>20</b>
<b>DA20 max. demonstrated crosswind component (kts)</b>	<b>20</b>
Max. crosswind component student dual (kts)	15
<b>Max. crosswind component student solo (kts)</b>	<b>10</b>
<b>Max. tailwind component (kts)</b>	<b>5</b>

### Misc.

Maximum airplane structural temperature (°C)	55
Propeller approx. minimum ground clearance (inches)	10
Main landing gear tire pressure (psi)	33
Nose gear tire pressure (psi)	26
Min. OAT (°C) cabin heat not req for 10 min. before T/O	-20

Items in red must be committed to memory

16-Dec-10



# Laughlin AFB, TX

## The Laughlin Experience

The following is an overview of the training you will receive at Laughlin AFB. As stated earlier, during your entire tour at Laughlin, you will be under the command of the 47 STUS/CC.

### I. APT—The time before SUPT starts

- Assigned to 47 STUS/DOT with the Transition Flight Commander as your supervisor, regardless of additional job throughout the wing.
- Initial Flight Training (IFT) in Pueblo, CO. TDY assignment for 3-6 weeks. Here you will fly the DA-20 in an SUPT style format. This is a screening program designed to see whether you are capable of completing SUPT. Ask other APTs for assistance and advice so you can hit the ground running. Once again, you are still under authority of Transition Flight for any non-IFT issue.

### II. SUPT Pre-Flying Academic Phase (Phase I)

- On Day 1, you will be assigned a 47 STUS Phase I Flight Commander. The Flt/CC is your link to the 47 STUS chain of command and will support you throughout Phase I.
- Pre-flying academics is a 31 day academic program focusing on aerospace physiology, aircraft systems and SUPT basic building blocks.

### III. SUPT Primary Phase (Phase II)

- As you transition to the Primary Phase, you will have a STUS Class Commander. You will be assigned to a Flying Training Squadron Flight Commander in charge of managing your syllabus training. Your STUS Class/CC will handle all other issues.
- Phase II is your introduction to the flightline in SUPT. The objective of Phase II is to prepare graduates for the advanced phase and future responsibilities as military officers and leaders.
- Phase II is a 6 month flight training program during which the student receives 50 hours of simulator training and 87 hours flight time in the T-6. Students receive simulator training in Basic, Contact, Instruments, Formation, IFR/VFR, and Low Level flight. There are four formal check rides: Mid-phase, Final Contact, Instrument, and Formation.

### III. Track Selection

- Personal preference and final merit rank after the Primary Phase determine which track you will continue on in Advanced Phase. Merit rank is 40% check ride performance T-Score, 30% daily maneuver T-Score, 10% academic T-score, and 20% FLT/CC ranking T-Score.
- There are three tracks: T-38s, T-1s (both at Laughlin), and UH-60 (Fort Rucker, AL).

### IV. Advanced Phase (Phase III)

- This is the advanced phase of SUPT during which your flying abilities continue to be challenged in each airframe. T-38s receive 30 hours of simulator training, and 90 hours of flight time. T-1s will receive 44 hours of simulator time and 87 hours of flight time.



# Laughlin AFB, TX

## Post SUPT

- **Introduction to Fighter Fundamentals**— If selected for a fighter after completing the Advanced Phase, IFF is your next stop. IFF is designed to teach the basic theory and application of flying fighter type aircraft. IFF students train in the T-38 to become proficient in air-to-air and air-to-ground tactics as appropriate to their assigned aircraft.
- **FAIP**—If selected as a First Assignment Instructor Pilot (FAIP) you are assigned to a T-6, T-1, or T-38. Your next stop will be Pilot Instructor Training (PIT) at Randolph AFB, TX for the 4-month course. After PIT you will return to Laughlin AFB for a 3-4 year assignment as an instructor followed by an MWS assignment.
- **FTU**—Those assigned to an MWS will depart Laughlin AFB for their respective Formal Training Unit course (FTU). Each FTU is unique to that MWS with course lengths ranging from 5 months to 9 months. Operational Assignments follow graduation from FTU.

F-35 – Luke AFB, AZ  
F-22—Tyndall AFB, FL  
F-15C—Kingsley Field, OR  
F-15E—Seymour Johnson AFB, NC  
F-16—Luke AFB, AZ / Holloman AFB, NM  
A-10—Davis-Monthan AFB, AZ  
B-1—Dyess AFB, TX  
B-2—Whiteman AFB, MO  
B-52—Barksdale AFB, LA  
C-17—Altus AFB, OK  
C-5—Lackland AFB, TX  
KC-135—Altus AFB, OK  
KC-10—McGuire AFB, NJ  
RC-135—Offutt AFB, NB  
E-3 – Tinker AFB, OK  
C-21—Scott AFB, IL  
C-130J—Little Rock AFB, AR  
MC-130J – Kirtland AFB, NM  
AC-130W/J – Kirtland AFB, NM  
U-28 – Hurlburt Field, FL  
C-146 – Duke Field, FL  
CV-22 – Kirtland AFB, NM